

Topic: TUI LOADING AND FIRE SYSTEM

Dear All,

As you already know in compartments Baggages must be loaded properly and **there must be a distance minimum 10cm or a palm fit between the Baggages and ceiling**. Otherwise, the fire extinguishing system does not work properly and cannot detect a possible fire.

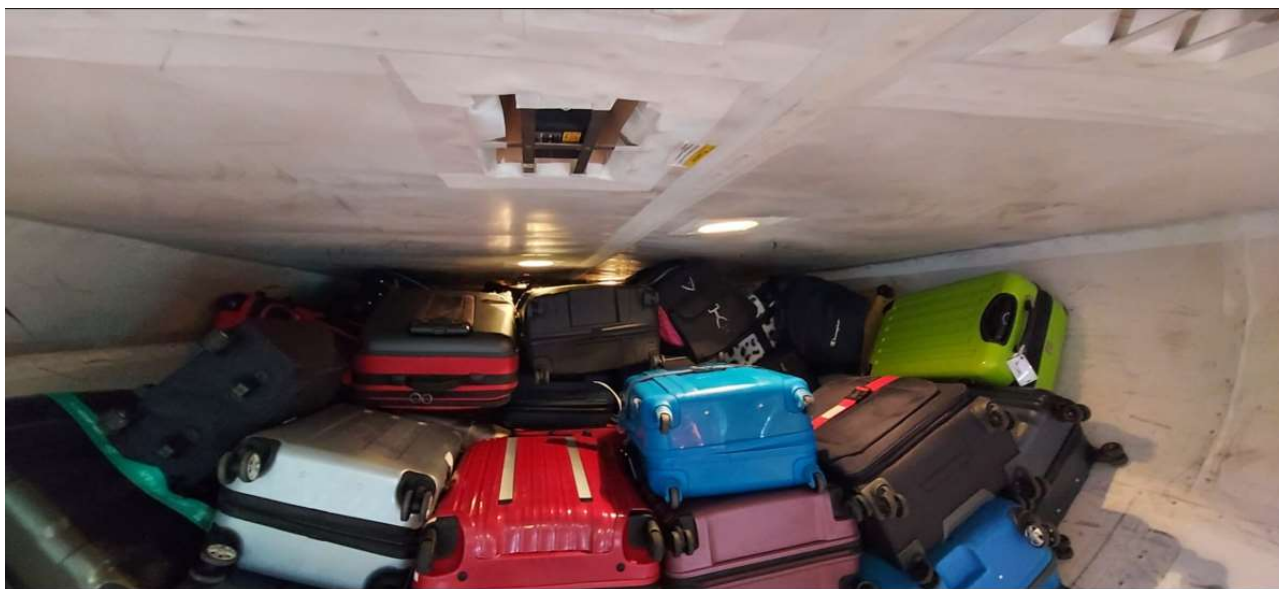
Unfortunately, during the week we faced this issue twice! Therefore, you must pay more attention to follow and warn Fraport Loading team accordingly!

I attach the 2 Pictures as a sample for wrong Loading!

It is in your hands to avoid such mistakes!

Thank you!

Burak Kahraman



Thank you!
Burak Kahraman