



# TUI Airline Ground Operations Safety Alert

Ground Ops Safety Bulletin Oct 2024

Notice: GOSA24-012  
Page 1 of 1

To: All Stations  
From: Michael George, Regulations & Standards Specialist  
Approved by: Jan Timmermans, Head of Network Operations  
Nial Mclean, Head of Station Operations  
Kay Bartels, Deputy Nominated Person Ground Operations TUI  
Hans de Greef, Nominated Person Ground Operations JAF  
Al Pease, Nominated Person Ground Operations TOM  
Helena Sahlin, Nominated Person Ground Operations BLX  
Amber Hoogendoorn, Nominated Person Ground Operations TFL

**Applicability:** TUI Airways (TOM-BY) / TUIfly Nordic (BLX-6B) / TUI fly Belgium (JAF-TB) / TUI fly Netherlands (TFL-OR) / TUIfly Germany (TUI-X3)

Date of Publication: 09 OCT 2024

Validity Period: 09 OCT 2024 - Until further notice

Dear partner,

Please find attached TUI Airline's safety poster October 2024 – this relates to 'Approaching Aircraft'.

This Safety Alert is primarily for all our Ground Handling service partners, but all other service partners with TUI operational activities are encouraged to display and share as required.

Following receipt of the safety posters, we encourage you to print and prominently display each within all your operational areas, on notice boards and within rest areas, etc. The principal areas of focus are around ramp, check-in, boarding and dispatch activities, but safety posters and bulletins will not just be limited to these areas.

With your assistance, we want to get our safety messages across to all your operational delivery teams and require your support in helping to reduce safety events and reducing the associated risks & trends.

All key operational staff should have full visibility of these safety notices and posters.

We plan to issue safety posters & bulletins monthly and when we identify increased safety risks and trends.

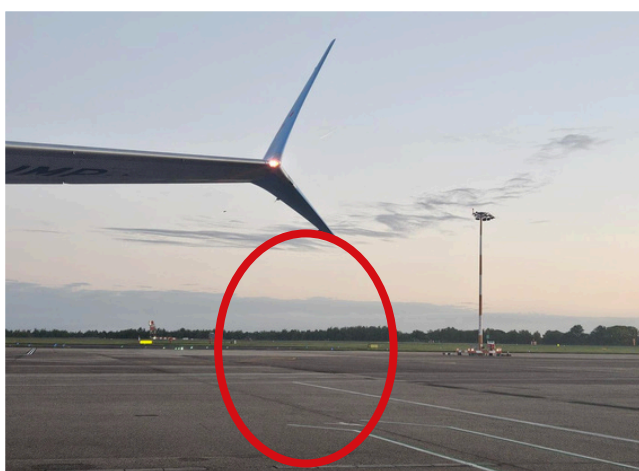
Kind Regards

TUI Airline Ground Operations

# SafeTUI First

## TUI Airline Ground Operations Safety Bulletin

Following recent IQSMS reports received, we would like to remind you about the importance of not approaching the aircraft with any GSE until all cones have been placed in the correct position



Multiple ground damage events have been caused due to equipment colliding with wingtips - in all events, the wingtip cones **were not in position**

This can be very expensive to repair and cause large amounts of disruption for customers



££££££££££



*To avoid the risk of damage to aircraft, please ensure all safety cones are positioned prior to GSE approaching the aircraft*

**Always take the time to do it safely every time**

If in doubt, report it!