



TUI Airline Ground Operations Safety Alert

Ground Operations Safety Bulletin July 2024

Notice: GOSA24-009

Page 1 of 1

To: All stations
From: Emilia Apostu, Regulations & Standards Specialist
Approved by: Jan Timmermans, Head of Network Operations
Nial Mclean, Head of Station Operations
Kay Bartels, Deputy Nominated Person Ground Operations TUI
Hans de Greef, Nominated Person Ground Operations JAF
Al Pease, Nominated Person Ground Operations TOM
Jacques Sol, Nominated Person Ground Operations TFL

Applicability: TUI Airways (TOM-BY) / TUIfly Nordic (BLX-6B) / TUI fly Belgium (JAF-TB) / TUI fly Netherlands (TFL-OR) / TUIfly Germany (TUI-X3)

Date of Publication: 09 AUG 2024

Validity Period: 09 AUG 2024 – Until further notice

Dear partner,

Please find attached TUI Airline's safety poster edition #12 – a reminder about NOT using the metal hooks for the 737 fleet

This Safety Alert is primarily for all our Ground Handling service partners, but all other service partners with TUI operational activities are encouraged to display and share as required.

Following receipt of the safety posters, we encourage you to print and prominently display each within all your operational areas, on notice boards and within rest areas, etc. The principal areas of focus are around ramp, check-in, boarding and dispatch activities, but safety posters and bulletins will not just be limited to these areas.

With your assistance, we want to get our safety messages across to all your operational delivery teams and require your support in helping to reduce safety events and reducing the associated risks & trends.

All key operational staff should have full visibility of these safety notices and posters.

We plan to issue safety posters & bulletins monthly and when we identify increased safety risks and trends.

Kind regards,

TUI Airline Ground Operations

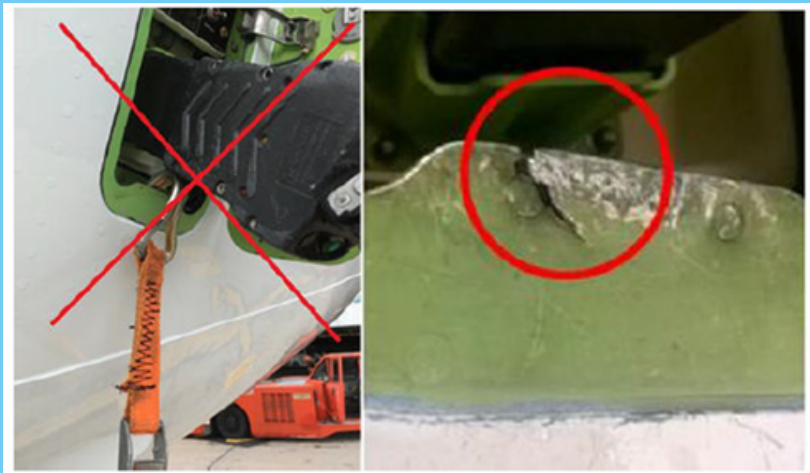
SafeTUI First

TUI Airline Ground Operations Safety Bulletin

Following recent IQSMS reports received, we would like to remind you about the importance of NOT using metal hooks for the 737 fleet.



1. Please do not hook this to any part of the airplane structure, including the panel door or latches as they are not designed for this purpose.
2. There is no specific point in which to connect it to, so if used, significant damage can be caused as presented in the pictures below.
3. Please be alert and supervise the operations to ensure this does not take place!



For more information please consult the procedures in the manuals: GHM 9.2.3.2.2, NRA GOM 9.2.5, WR GOM 9.1.3.11



Recent report received by the X3 team where a metal hook was used to attach the GPU switch.

If in doubt,
report it!