

FLIGHT QUALITY, SAFETY AND SECURITY BUREAU

Special DGR Safety Bulletin

No. 04/2024



Events related to the transport of dangerous goods

Compiled by:
Krzysztof Świder
Safety Inspector

Dear Ladies and Gentlemen,

Observing the recent incidents with dangerous goods occurring in the LOT fleet, we decided to share some observations and information. For this purpose, this bulletin summarizing the third quarter of 2024 has been created.

To avoid fatal consequences, packages containing dangerous goods must be protected from damage, interaction, spontaneous change of position or movement:

- in storage,
- during transport from/to the aircraft,
- during unloading/loading from/to aircraft and ULD,
- in the aircraft.

Inspect hazardous materials shipments for markings, damage, and possible leaks prior to loading into aircraft.

If loads are handled improperly, the packages, and thus the contents, can be damaged.

Shipments with hazardous materials must be secured in a manner that prevents uncontrolled movement.

When securing the shipment with ropes, remember not to use too much force, which could result in damage to the packaging.

On airplanes, shipments of hazardous materials should be placed only in locations and in the manner permitted by DGR and carrier regulations.

In case of rain or inclement weather, the shipment should be properly secured on the cart.

Thank you for all the reports submitted and I encourage you to add the following information to your protocols:

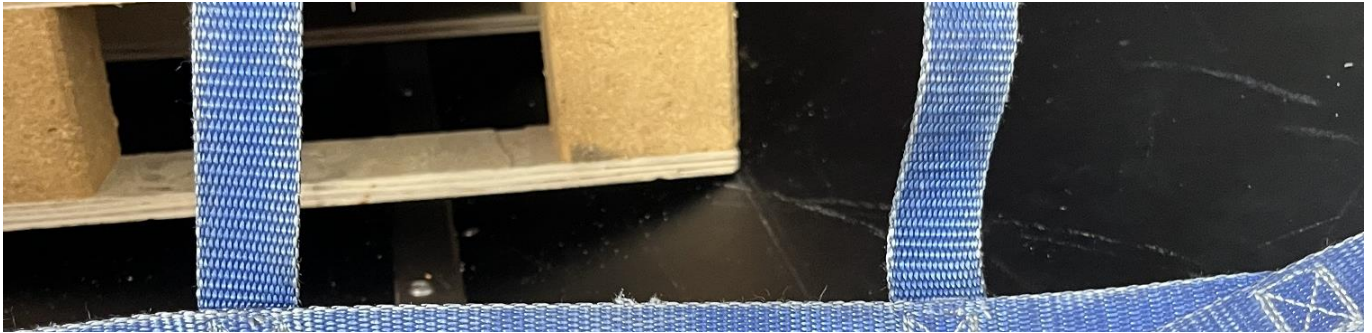
- **Basic risk**
- **Subsidiary Risk**
- **Total Number of Packages and inner Packages**
- **Type of Outer Packaging and inner Packaging**
- **Quantity per inner Pack**
- **Packing Group**

In addition, I would like to remind you that the report should be emailed to **flight.safety@lot.pl** and **dgor@lot.pl** within the **next 72 hours after the event**. Please also send the AWB, NOTOC and checklist as an attachment to each report. In case of irregularities detected during unloading, please **send photos from the luggage hold**.

If the fire department or other chemical rescue personnel are called, request that a copy of the confirmation be attached.

Below is a brief description of hazardous materials incidents.

1. 080-37574574/ 080-37574585



Improperly secured DGR consignment with no damage. Pallet resting on side panels and tied to ceiling.

During the loading of phase, the ramp team loaded a DG shipment into the hold when the majority of the baggage was loaded. The shipment came on a large wooden pallet and was loaded into compartment 4 what was the only space available at the time. The Team Leader was unable to find sufficient mooring points on the floor area and was forced to use points found above the head. Although the team leader had never seen or himself secured cargo in this way, he stated that offloading the baggage to place the cargo in a more secured location would mean delays which he was scared to cause.

Pay more attention when tying up shipments in the cargo hold.

2. PAX BAGGAGE

During the screening of transfer baggage, security staff found two bags with batteries in them.

The decision by LOT was for the passenger to fly on the original flight and for the luggage to remain in WAW.

3. 080-37589361



During the unloading of the aircraft, an improperly secured DGR-tied to the grid was reported.

As a result of the strapping, the cardboard packaging was damaged.

Pay more attention when tying up shipments in the cargo hold.

In addition, pay attention to what you are attaching shipments to.

4. 080-37758884

One package was detected crushed and torn.

Photographs were not taken. No precise answer was received at what stage the damage occurred.

Pay more attention to the handling of packages and whether damage is being done to them.

Please take photos of the damage that has occurred.

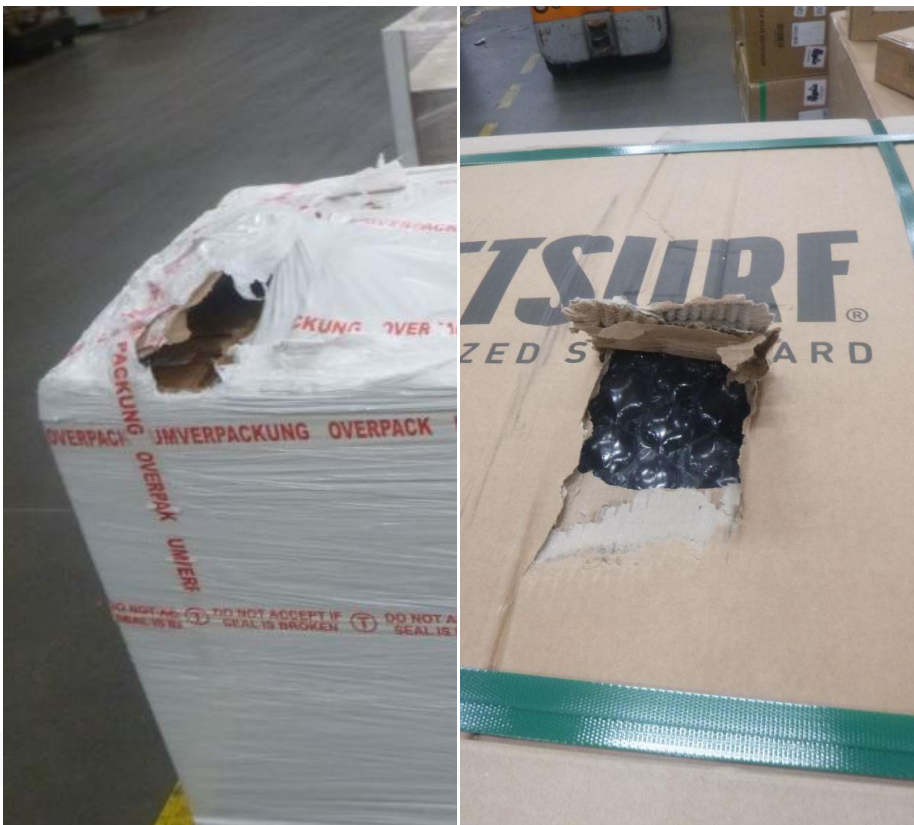
5. 080-37466741



During unloading, an improperly secured consignment containing DG was discovered in the luggage compartment. Consignment covered with suitcases while not meeting the condition of filling the luggage compartment 3/4 full. Lack of tying.

Ensure that the conditions for securing cargo in the luggage hold are met.

6. 080-37619455, 080-37618652



During the unloading of a truck in the EXPORT area, two torn OVERPACK packages with hazardous material were noticed. The consignment was isolated and secured with red tape.

You should carefully inspect the shipment before loading and, in more critical cases, stop loading and set the package aside to replace the outer packaging or thoroughly secure it.

Pay more attention to shipments and the time at which the incident may have occurred. Move shipments more carefully.

7. 080-37667243



Damage to the outer packaging was found during unloading. The cause of the incident was most likely due to the package being tied down too tightly in the luggage hold. There was no damage to the consignment inside the packaging.

Pay more attention when tying up shipments in the cargo hold.

8. 080-37686611



Report of a soaked outer packaging of a consignment of RRY radioactive material. Package loaded on trailer, placed on planks and tied down, visible wetting on top and sides and bottom of shipment. The consignment was taken from Cargo with other cargo, the wetting may have been caused by a slight leak in the roof of the trailer and during the rain the water seeped through the rope that was tied to the trailer for transport. Soak detected before loading onto aircraft.

More carefully protect shipments from precipitation for the period of transport to the plane for its loading. Pay attention to whether the trailer or conveyor belt is contaminated.

9. 080-37703212



The tape securing the bottom edge has come loose and material has collected behind it and started to spill out when it was moved. On inspection it was found to be sorbent material.

You should carefully inspect the shipment before loading and, in more critical cases, stop loading and set the package aside to replace the outer packaging or thoroughly secure it.

Pay attention to ensure that the safety tape does not peel off.

10. 080-08984404



During unloading, a torn, ripped package containing dangerous material was noticed. The consignment was isolated and secured with red tape.

You should carefully inspect the shipment before loading and, in more critical cases, stop loading and set the package aside to replace the outer packaging or thoroughly secure it.

Pay more attention to the handling of packages and whether damage is being done to them. Pay more attention to shipments and the time at which the incident may have occurred. Move shipments more carefully.

11. 080-37730685



During the loading of the flight, soaked packs containing dry ice were noticed.

More carefully protect shipments from precipitation for the period of transport to the plane for its loading. Pay attention to whether the trailer or conveyor belt is contaminated.

12. 080-37676623

During unloading, a shipment without documents was noticed.

Please check your shipments carefully with the necessary documentation.

Check that missing documents are not in a pouch in the hold or have not been handed over to the flight crew.

Zwracajcie uwagęThe security barrier worked. Damaged barrel was detected before it was handed over to be loaded onto the aircraft.

Please pay more attention when loading or unloading shipments intended for transport by truck.

13. Electric wheelchair



An electric wheelchair arrived unsecured in the cargo hold. After handover off the wheelchair to the passenger, passenger reported damage and that the mechanic part which secures the keys to the wheelchair to turn off all power is missing. Therefore wheelchair could not be started, only moved manually. The compartment and surrounding apron area and belt loader was searched, but the key not found.

Pay more attention when loading non-standard items.

Pay more attention to shipments and the time at which the incident may have occurred.

14. 080-37686924



During loading, a metal barrel from DGR RRY was damaged - the barrel tipped over on the conveyor belt and hit the edge of the cargo hold..

Be more careful when loading and carrying shipments from the conveyor belt to the cargo hold.

15. 080-37835910

The consignment has discrepancies on the package with a DGR Class 9 RMD sticker and a handling sticker Environmentally hazardous material. There is no record of the consignment containing RMD on the AWB list, no dangerous goods declaration and no checklist for RMD.

Check the outer packaging carefully to remove unwanted markings and/or labells. Please check your documentation carefully before shipment.

16. 080-37703083



Report of an overturned RCM shipment lying on its side, marked with arrows. Cardboard shipment attached to a small pallet (one corner leg in the pallet was broken and supported by a wooden peg for transport) and placed on a Europallet.

The employee didn't report the damage and substituted a wooden piece of wood under the broken leg.

You should carefully inspect the shipment before loading and, in more critical cases, stop loading and set the package aside to replace the outer packaging or thoroughly secure it.

Pay more attention to the handling of packages and whether damage is being done to them.

17. 080-37478044

Upon delivery of the goods from the board to the warehouse, the accompanying documents were found to be missing: AWB, DGD, Checklist.

Information was received that the documents had been attached for the flight.

In the absence of documents, check the pouch in the cargo hold or ask the flight crews, as they too may have such documents.

18. 080-37902841



During transport, part of the load on the trailer moved. Metal crates loaded on top of each other, one of the crates fell on the trailer and damaged the consignment next to it. As a result of the fall, the outer packaging of the consignment was crushed and torn, the inner packaging appears to be undamaged

Pay more attention to securing shipments on transport trailers.

19. 020-37305903



Cut/torn box with signs of sealing.

No discrepancies were noticed during handling at the cargo. The defect was not detected during unloading from the aircraft after the previous flight or during handling at the cargo terminal.

You should carefully inspect the shipment before loading and, in more critical cases, stop loading and set the package aside to replace the outer packaging or thoroughly secure it.

Pay more attention to shipments and the time at which the incident may have occurred.

Move shipments more carefully onto transport trailers after unloading the aircraft.

More carefully protect shipments from precipitation for the period of transport to the plane for its loading. Pay attention to whether the trailer or conveyor belt is contaminated.



A torn carton of hazardous material was noticed during the unloading of an airline pallet. No visible signs of damage to the shipments inside were found. The OVERPACK is torn.

The OVERPACK under DGR regulations is not a package, but is a transport unit. The security has fulfilled its purpose.

Pay more attention to shipments and the time at which the incident may have occurred.

Thank you for all the reports submitted and I encourage you to add the following information to your protocols:

- **Basic risk**
- **Subsidiary Risk**
- **Total Number of Packages and inner Packages**
- **Type of Outer Packaging and inner Packaging**
- **Quantity per inner Pack**
- **Packing Group**

In addition, I would like to remind you that the report should be emailed to **flight.safety@lot.pl** and **dgor@lot.pl** within the **next 72 hours after the event**. Please also send the AWB, NOTOC, manifest and checklist as an attachment to each report. In case of irregularities detected during unloading, please **send photos from the luggage hold**.

If the fire department or other chemical rescue personnel are called, request that a copy of the completion confirmation be attached.

We would like to draw your special attention to loading, accepting and transporting on the apron in unfavourable conditions such as rain. Thank you very much.