

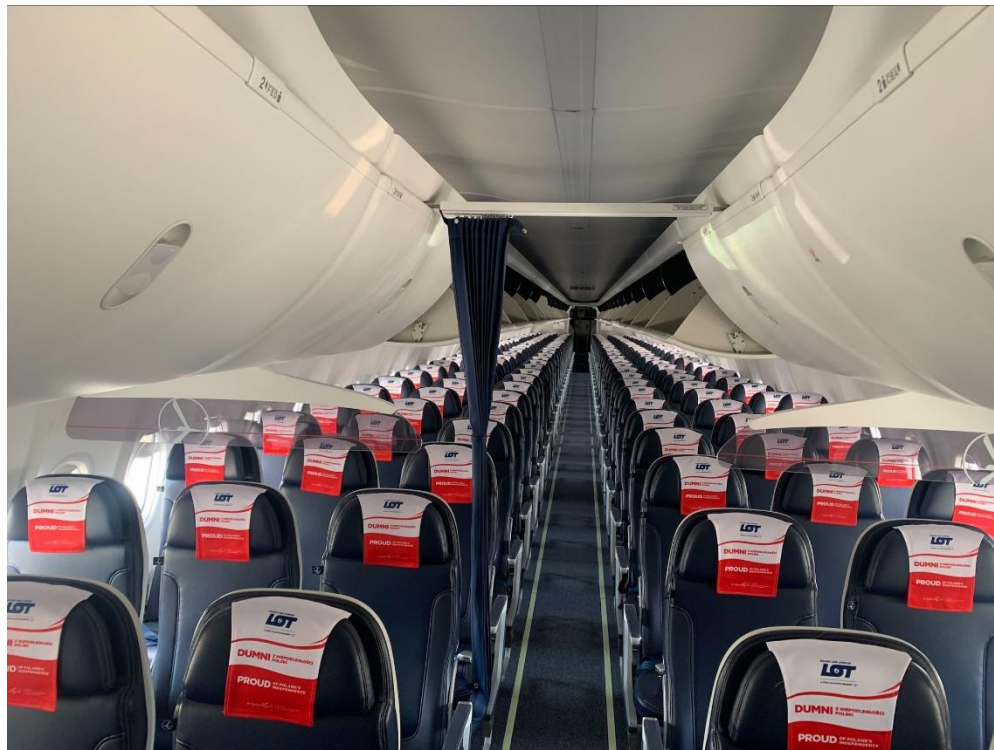


Class divider relocation instruction

Warszawa, 12.04.2021

B737-8 Class divider consist of:

- Side class divider provisions
- Side class divider
- Center class divider mounting rails
- Curtain rail assembly (rail + curtain)



Center divider elements

/ TAJEMNICA LOT /



1. Mounting rail
2. Quick release assembly
3. Curtain rail
4. Curtain

Quick release assembly allows relocation of the class divider as well as the removal of the component out of the rail (in case of emergency or in order to move the class divider to the mounting rail inside other overhead bin). In order to unlock the quick release assembly and allow the button to be pushed, please move red element to the side. It is important to lock the quick release assembly when the class divider is set in place.



Unlocked position



Locked position



Unlocked position

Center class divider elements

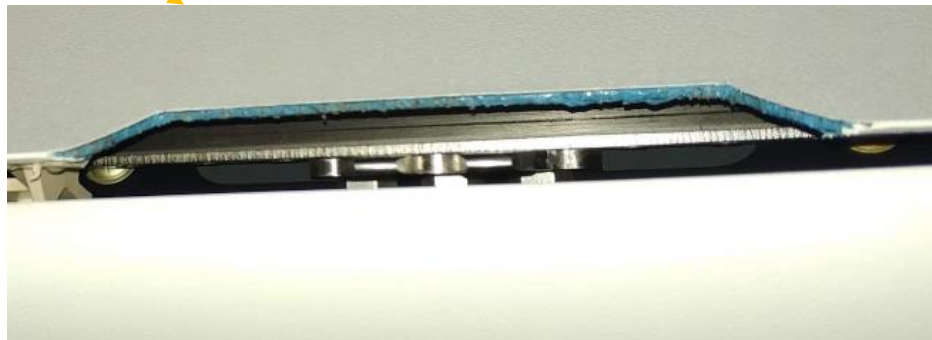
/ TAJEMNICA LOT /



Side class divider



Outboard provision



Inboard provision

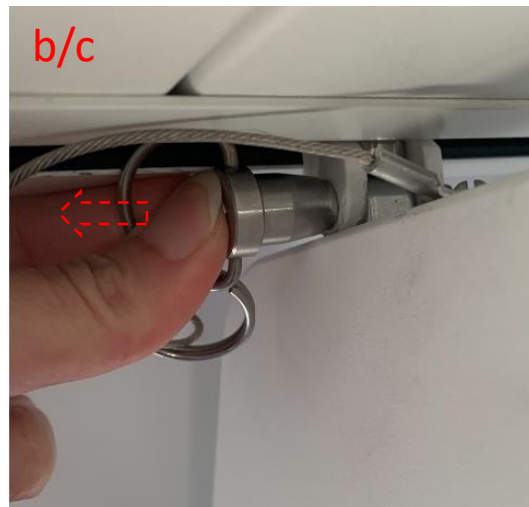


Side class divider relocation

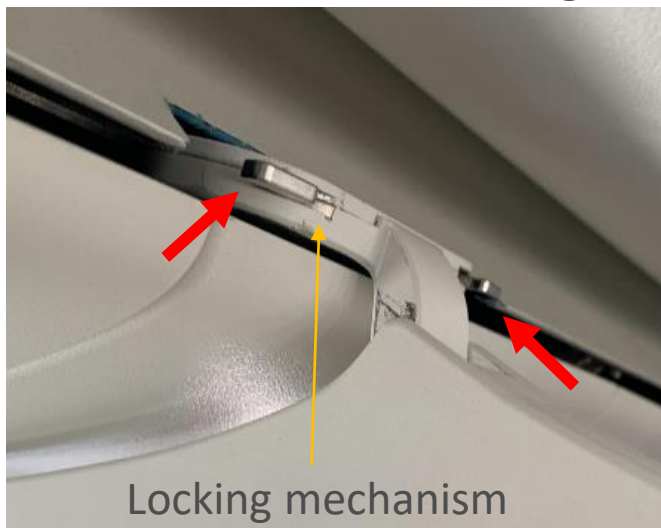
Side class divider relocation

/ TAJEMNICA LOT /

1. Open overhead bin for better access
2. Remove the pin from outboard provision
 - a. Locate the pin
 - b. Push the button to unlock the pin
 - c. Remove the pin by pulling it out



3. Push the release mechanism which attaches class divider to inboard provision and pull it inboard to remove it. Please hold class divider by using one hand and use other hand to push the release mechanism. Be prepared to hold the weight of class divider while its being removed.



Side class divider relocation

/ TAJEMNICA LOT /

3.



Side class divider relocation

/ TAJEMNICA LOT /

3.



Side class divider relocation

/ TAJEMNICA LOT /

4. In order to install class divider in a new position
 - a) Hold class divider with a firm grip



Side class divider relocation

/ TAJEMNICA LOT /



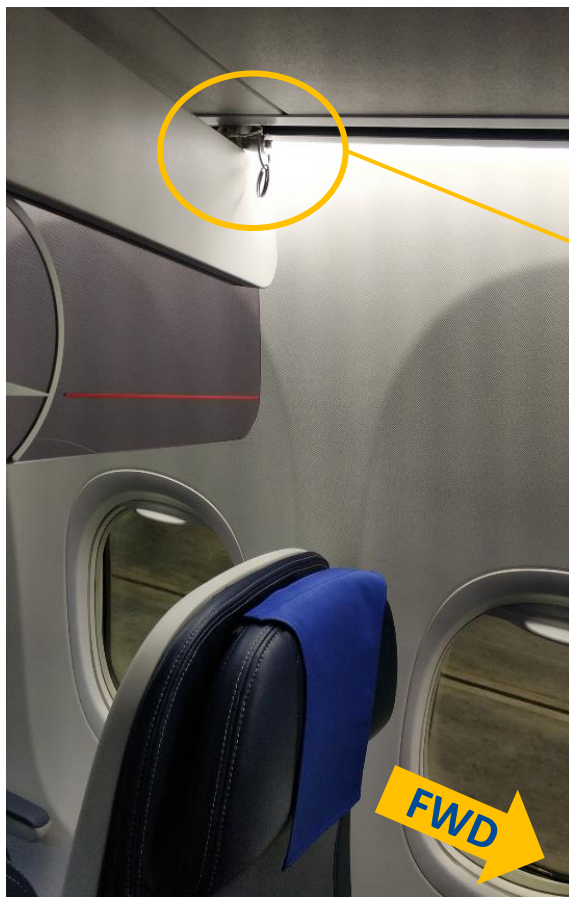
b) Make sure class divider will connect to outboard and inboard provision at the same time (align class divider with outboard and inboard provision for proper installation)



c) When class divider is properly installed „click” can be heard. Slightly move the locking mechanism to verify if it sits properly in inboard provision

Side class divider relocation

/ TAJEMNICA LOT /



d) Install locking pin into outboard provision (correct PIN installation od picture, opposite to the direction of the flight)



Center class divider relocation

Center class divider relocation

/ TAJEMNICA LOT /

1. Make sure curtain is not tied down to the seat.



2. Open overhead bin to get access to the quick release assembly and mounting rail.
3. Unlock quick release assembly by moving red component to either side



Unlocked position



Locked position



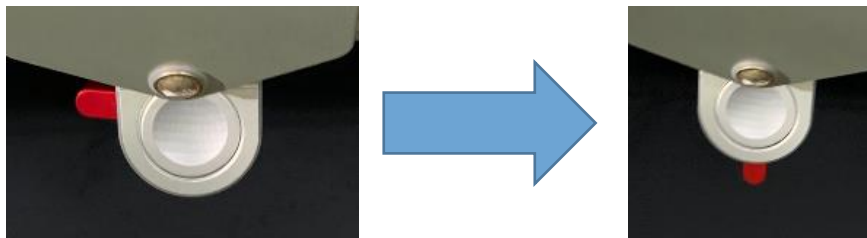
Unlocked position

4. Push the button to remove rail assembly from mounting rail or to slide quick release assy along mounting rail. In order to slide it along mounting rail – please keep the button pushed.

(in order to relocate class divider within one bin quick release assy can be slid along the mounting rail, in order to move class divider into mounting rail in different OVH bin it must be removed from mounting rail)



5. When class divider is set on requested position, please release button. If the quick release assy is properly set on mounting rail „click” can be heard and button will come back to the initial position.
6. Lock the quick release assy



7. Tie down curtain to seat armrest to prevent its movement along curtain rail during taxi and take off



Center class divider relocation

/ TAJEMNICA LOT /

8. During flight curtain can be attached to the side of curtain rail.

