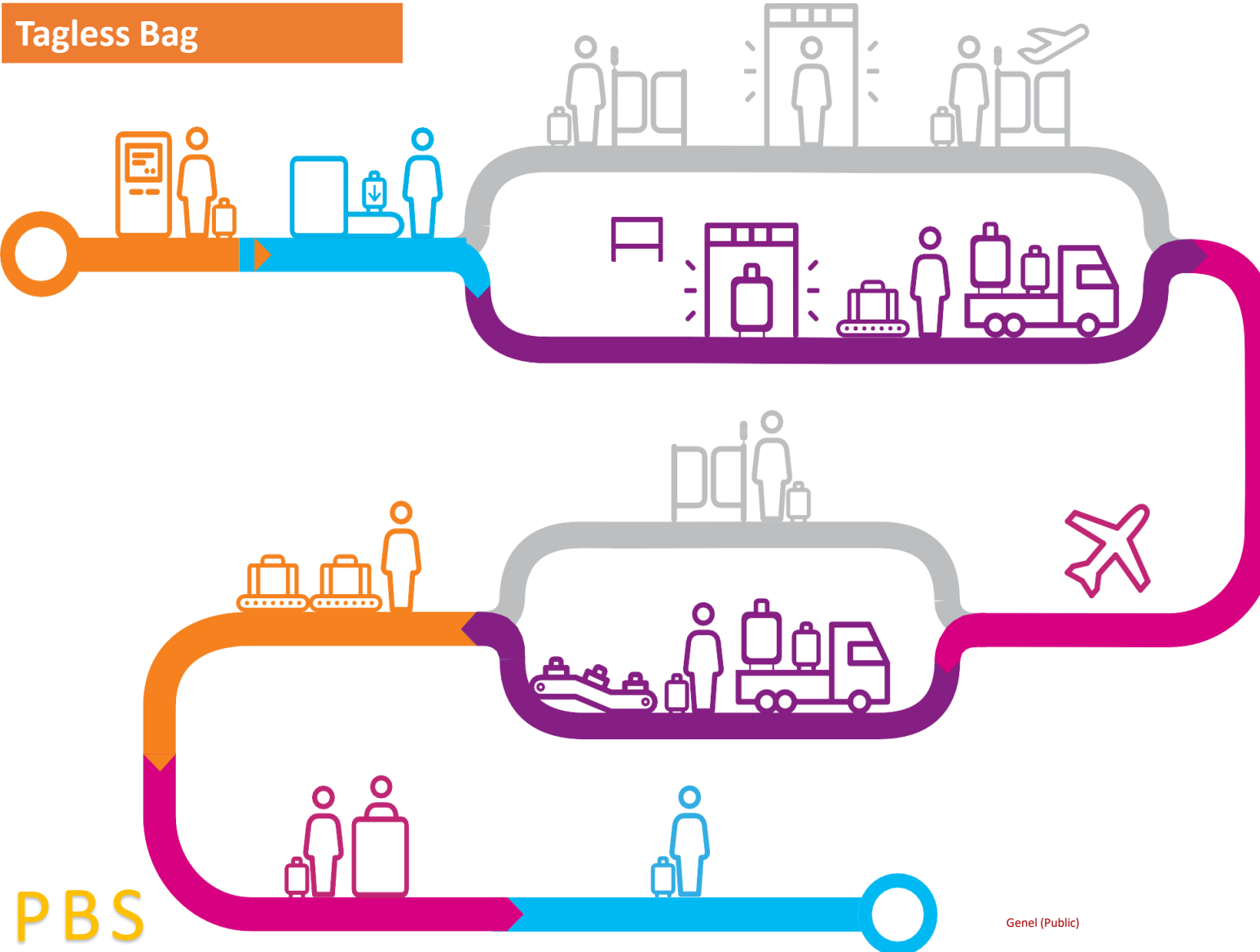




Prevent Baggage Irregularities



ANALYSIS

Many disruptions can occur in the journey of a baggage from check -in to arrival. It is up to us to prevent many of these disruptions. In this bulletin, we will talk about the ways to prevent and/or minimize the tag-less baggage failure, which is the most common problem in Pegasus Airlines baggage handling operations. There are many reasons why a piece of luggage may leave behind taggles. These are not being labelled properly at Check -in, the flaps of the tag not being attached to the luggage, the flaps being taken from the luggage due to the bingo sheet application, the label may be stuck on the sortation system and breaking off, the luggage tag breaking or falling off at the transfer point, the label losing its strength in rainy weather or bad weather conditions . We can list many reasons. So, is there a way to eliminate all these reasons? It is up to us, the employees to prevent many of them. Let's see what we can do to prevent and minimize this disruption.

Tagless Bag



Prevention

First, when tagging a baggage, we must peel the tag up to the middle part. Since the sticking surface of the tag, which is opened only from the tip will cover a narrow part it will cause the label to fall over the trunk while moving on the system. For this reason, the label should be peeled up to the middle part and it should be ensured that both surfaces adhere to each other. The small flaps (2 or 3 pieces) on the luggage tag must be affixed to the luggage different sides and should not be left on the label. If we do this, even if the tag falls off the baggage, we will be able to identify the flight and the guest belonging to the baggage with the help of the flaps we stick on the sides of the baggage, and we will be able to produce new tags for the baggage again. Due to the lack of systematic infrastructure , one of the flaps belonging to the luggage must be left on the luggage at the airports where the bingo sheet application is made. When labelling the luggage, it must be attached to the handle of the luggage. In rainy weather, and bad weather conditions luggage trolleys should be sent under the aircraft with covered and loaded without waiting. Let's not forget that 10% of the baggage which left behind as tag less remains because the baggage tags get wet and lose their adhesive strength. Old mini stubs must be removed, to get well sortation of elimination for secure and correct baggage reconciliation.