

**Structural Damages in the Aircraft Hold, Poor / Inadequate  
Packaging, Shipments with Sharp Edges / Metal Frames and Pallets --  
- REMINDER**

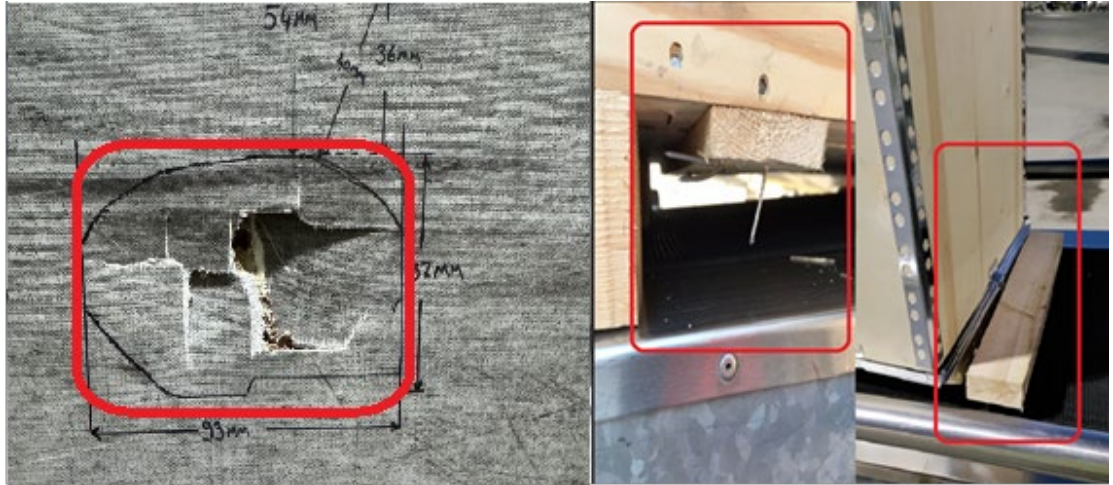
TO : WCS & All Cargo GSA & Cargo Handling / Warehouse Companies & Freight Forwarders  
FROM : Pegasus Cargo

Dear Partners,

We would like to remind you that sharp edges, metal frames or pallets with nails, wet, damaged, formless, inadequate boxes and inappropriate special loads shall not be accepted and loaded on Pegasus Airlines flights.

These kinds of unsafe shipments or consignments with insufficient packages create serious damage to the aircraft hold floor, cargo door and other shipments/baggage easily which may cause AOG aircraft and swaps during the loading, offloading and flight easily. To prevent these delays, damage, unsafe conditions and claims please pay attention to packing your shipments with sufficient material that secures and protects the content.

**DO NOT  
ACCEPT!**



Please kindly share with all your staff related this situation (about the safety, security and all relevant issues of our operation within the "Just Culture" policy), for the purpose of raising awareness and assessing the possibility of such damages occurrence during loading / unloading and flight. Thank you!

Best regards,

Pegasus Cargo