

AMADEUS ALTEA Flight Management (JFE)/ MOBILE

SAS will introduce two new features to Altea FM/ FM Mobile:

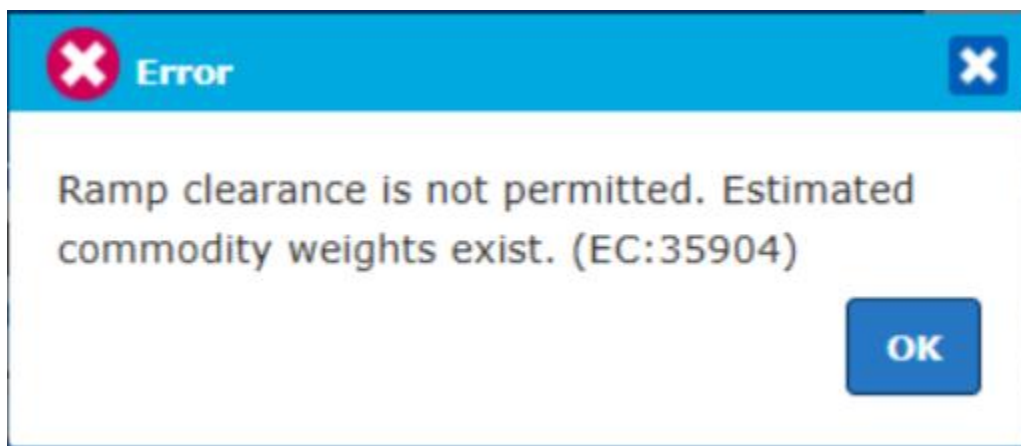
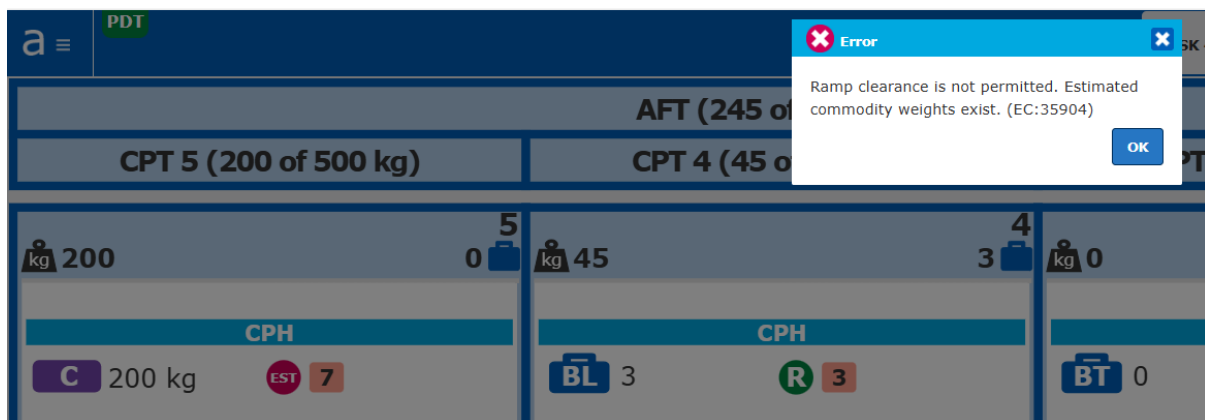
Rejection of RAMP Clearance when estimated load exist:

Introduction

Often the Cargo Feed is sent to FM with estimated weight figures, this is because the Cargo department have not completed the build and are unable to provide final figures. Any estimated weights present when finalizing the flight will prevent the creation of the Final Loadsheet.

This change is intended to add safety to the Ramp Clear process highlighting any estimated weights present, giving the Ramp Agent and Load Controller more time to check and update the Estimated weights in order to complete the Ramp Clear process.

An estimated weight figure will need to be validated, and the necessary updates made to remove the estimated flag from the load, to allow Ramp clearance of the load to be permitted.



Ramp Handling Load Distribution

Documents

 Messenger

(EC:35904) Ramp clearance is not permitted. Estimated commodity weights exist.

Find Flight

Flight Number:

SK

1407

Flight Date:

03JUN25

Port:

ARN

Find

(EC:35904) Ramp clearance is not permitted. Estimated commodity weights exist.

Find Flight

Flight Number:

SK

1407

Flight Date:

03JUN25

Port:

ARN

Find**Flight Details**

SK1407 03JUN ARN-CPH S1510 L

32E EI-SCD Aircraft Owner: SK

Subscribe Messages

Add Agent

Load C

CPT 5 + 4 + 3 Remain 4758 kg

CPT 5 Remain 300 kg

CPT 4 Remain 2047 kg

CPT 3 Remain 2411 kg

5✓

CPH C
200 E

4✓

CPH BTr
2 PCS
30CPH BLr
1 PCS
15

Automatic refresh (only on FM Mobile):

Automatically refreshes the data displayed on your screen with changes made by Load Controller, at a time interval set.

The refresh time interval is reset after an automatic refresh, a manual refresh or a save.

It is unavailable when you are performing actions, or have unsaved changes on your flight, when the button returns to manual refresh.



Manual refresh:



Automatic refresh:



SAS will set the refresh interval to 30 seconds.